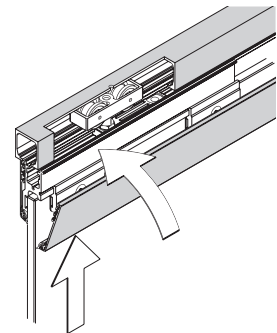


The hardware with an aesthetic profile for all-glass sliding doors

HAWA-Junior 40 – 80/GL

About the product

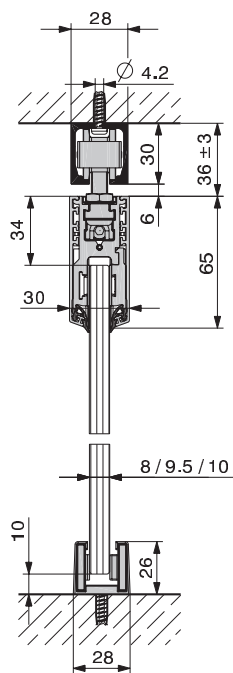
The HAWA-Junior 40 – 80/GL is an appealing solution for sliding glass doors with a door weight of 40 to 80 kg (88 to 176 lbs.) and a width of up to 1200 mm (3'11 1/4"). The technology disappears behind flexible covers and a continuous, straight-line profile, also available in a stainless steel look. Not that it needs to hide itself away: smooth running properties, dry glazing with a form-fitting connection between glass and hardware, clip-on aluminium covers, rattle-proof floor guides and stopper technology with adjustable bumpers are all reason enough to find this versatile hardware more than fascinating.



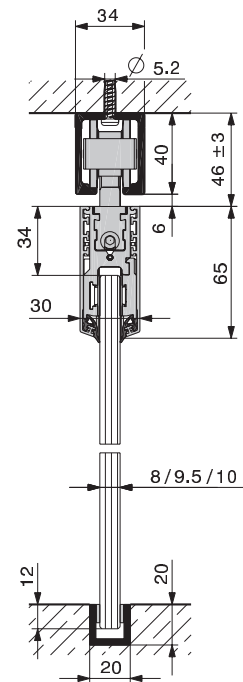
Just clip it on:
aluminium profiles.



Beautiful living with HAWA-Junior 40–80/GL.



HAWA-Junior 40/GL



HAWA-Junior 80/GL

Technical specifications

Max. door weight 40–80 kg
(88 – 176 lbs.)

Door width 500–1200 mm
(1'7 ¹¹/₁₆" – 3'11 ¹/₄"

Glass thickness sliding door

ESG 8/9.5/10 mm (⁵/₁₆"/³/₈"/¹³/₃₂"

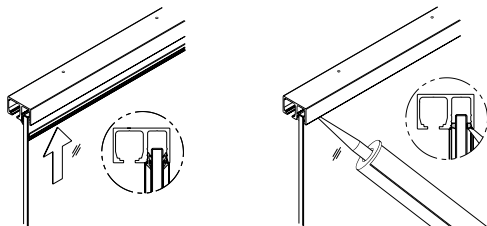
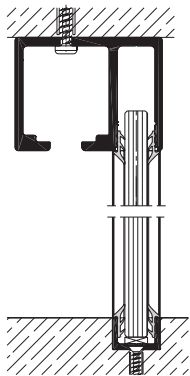
Glass thickness stationary glass

ESG/VSG 10–12 mm (¹³/₃₂"/¹⁵/₃₂"

At a glance

- Straight-lined and straight-forward, a design to harmonise with any environment.
- High-quality, smooth-running sliding technology, proven time and again.
- Cover profiles, top tracks and angled profiles in a stainless steel look, plain anodized, or untreated, ready for painting on site.
- Rattle-proof floor guides prevent rattling caused by drafts.
- Aluminium profiles simply clip on. Comfortable operation thanks to a stop bumper, adjustable to suit the door weight.
- Very secure glass mounting, even when subject to heavy use and weather changes.
- Top track with retainer profile for stationary glass.

Top track with retainer profile for stationary glass for HAWA-Junior 40–80/GL



Fitting and sealing stationary glass: no problem.
Either with the rubber profile (left) from Hawa or with
a silicone seam (right).